

GM, Ford & Chrysler Performance Parts

Chrome Moly Steel Slip Yokes

Hardy Spicer takes transmission slip yokes to a new level by offering a new range of USA made affordable, high-quality 1350 chrome moly performance yokes. Also 1310, 1330 and 3R series available ex USA on special order.

Forged & Precision Machined

High performance slip yokes are forged – not cast – for greater strength and undergo a precision machining process to guarantee exceptional balance and minimal runout.

100% Leak Tested

No need to worry about leaks. The seal plug is OD ground for a superior seal, and all slip yokes are air tested to 40 PSI.



Mustang
3-2-1859A



EB-EF Falcon
3-2-949A



BA, BF & FG Falcon
3-2-108CVA

Aluminium Flanges

Ford Falcon & Mustang

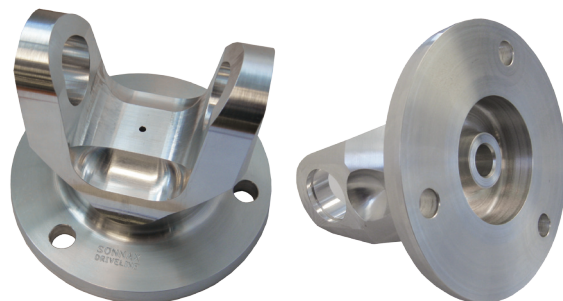
Upgrading your Falcon or Mustang to a stronger 1350 series lighter driveshaft is now possible with these new aluminium flange yokes. Forged and precision machined to suit the 1350 series u/joint will reduce your rotating mass as well as your costs.

Aluminium Adapter Flange

Hardy Spicer now has stock available to replace rubber drive couplings with 1350 UJ's on VE-VF Commodore V8 fixed transmission and diff. FG Ford XR6 Turbo, XR8 and FPV V8 transmission fixed transmission outputs on high output modified vehicles up to 1000 hp.

Extensive range of aluminium shaft products including flange yokes, tube yoke and tubing is also available.

Aluminium Adapter flanges are recommended for high output modified and race applications only as removing the rubber coupling and going to a non cushioned drive may change characteristics and develop drivetrain noise, vibration and harshness so is not recommended for daily driver/on road vehicles.



Part Number: 3-2-GMFD01

GM, Ford & Chrysler Performance Slip Yokes



Part Number	Description	Centre UJ to End	
3-3-6081HP	1350 Slip Yoke GM 27SP CR/MO	5.47"	138.9mm
3-3-6081RB	1350 Slip Yoke GM 27SP CR/MO	5.47"	138.9mm
<i>*Hardened bearing surface for use in Performance Roller Bearing Transmission output housings</i>			
3-3-4281HP	1350 Slip Yoke GM 27SP CR/MO	6.94"	176.3mm
3-3-8251HP	1350 Slip Yoke Ford 28SP CR/MO 165.1CE	6.50"	165.1mm
3-3-14061HP	1350 Slip Yoke Ford 28SP CR/MO 1.598GH 168.4CE Later Model US Ford	6.63"	168.4mm
<i>*Larger 1.598" seal diameter to suit most 95 on US Ford 28 spline boxes.</i>			
3-3-3931HP	1350 Slip Yoke Chrysler, Mopar, Doug Nash 30SP CR/MO	6.63"	168.4mm
3-3-2491HP	1350 Slip Yoke Ford 31SP FMX, C6, T25 Toploader CR/MO FULL SPL	6.44"	163.58mm
3-3-2431HP	1350 Slip Yoke GM 32SP T400 CR/MO	5.50"	139.7mm
3-3-2431CBHP	1350 Slip Yoke GM 32SP CR/MO C/BORE	5.50"	139.7mm
<i>*Converts bolt on type T400 Truck transmissions to slip type.</i>			
3-3-2431RB	1350 Slip Yoke GM 32SP T400 CR/MO	5.50"	139.7mm
<i>*Hardened bearing surface for use in Performance Roller Bearing Transmission output housings</i>			
3-3-5571HP	1350 Slip Yoke GM 32SP CR/MO FULL SPL	6.94"	176.3mm
3-3-5551HP	1350 Slip Yoke GM 32SP CR/MO C/BORE	7.94"	201.7mm

Adelaide • Bunbury • Dandenong • Darra • Eagle Farm • Hobart • Illawarra
Kalgoorlie • Mackay • Newcastle • Perth • Sunshine West • Sydney • Townsville

1300 304 673
www.hardyspicer.com.au